

Ditech Communications
GUI Console Integration

DESIGNED BY

Global Mobility Services

2385, Hammond Drive Suite 8
Schaumburg, IL 60173

INDEX

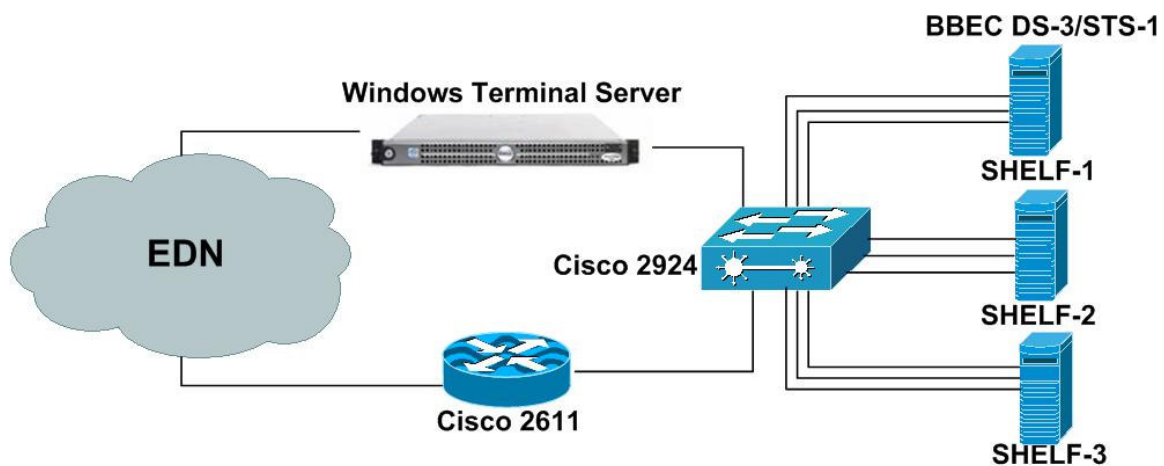
Project Definition.....	1
Project Description.....	1
Project Design.....	1
Equipment Specification.....	2
Features.....	2
Reach Us.....	3

DEFINATION

To access Ditech BBEC DS-3/STS-1 Echo Canceller's GUI from Wireless Carrier Network using single global IP address

DESCRIPTION

MSC is the integration of the multiple devices from the various vendors. Configuration, monitoring and maintenance of all that devices are very important factor in order to achieve high productivity and benefits. You can have the two way to configure, monitor and maintain the various system in the MSC: one way is to do all this function manually at the same place where you have all such devices and other way is to design you access system such that your engineers or appropriate responsible person can configure, monitor as well as maintain the same system from his or her own place or from the office desk.



Wireless Carriers facing the problem with accessing various telecommunication system access from the technical officers desk. Every time they had to go to the control room for accessing the system. One of the example of accessing the Ditech System is explained here: Wireless Carriers are using Ditech's BBEC DS-3/STS-1 system for the echo cancellation at MSC. To configure as well as to monitor this system they need a special GUI from Ditech. To use this GUI either they need to connect your computer on same subnet as STS-1/DS-3 system or they need a number of global IP addresses as per the number of devices. Wireless Carrier might have various number of Ditech system for echo cancellation into MSC as per their network. For example, if MSC has 24 (for example) Ditech System carrier has to have 24 Public IP Address, but to use 24 IP addresses is not a good design and its also very expensive and monitoring of the same devices from control room is not feasible. GMS experts understand this problem and has provide the such a solution so that Wireless Carriers engineers can configure, monitor and maintain the various telecommunication system from their desk. GMS has completed this task with the help of very basic hardware like Dell Server

Window 2000 Terminal Server, Cisco Router and Cisco Catalyst Switch devices which fulfill the Wireless Carrier's budget plan. In GMS also planning to upgrade this existing project with the help of SUN Solaris Server so Wireless Carriers can have more productive output for their business.

EQUIPMENT SPECIFICATION

GMS has designed and implemented this project using multi vendor equipment like Cisco 2611 Router, Cisco 3550-48 Port Switch. As well GMS has installed and configure the Windows 2000 terminal server on Dell Power Edge 750.

FEATURE

This project allows technicians to access and configure all Ditech system remotely using single global IP address using Telnet-client and Terminal-client.

REACH US

For further query regarding the same you can get back on following mentioned address or can contact the company executive at following mentioned email address

Registered Office

Global Mobility Services

**2385, Hammond Drive Suite 8
Schaumburg, IL 60173**

Phone: 847-925-8134

FAX: 847-925-8135

Email: info@gmobility.com